

FIP15G High-end Touch Screen IP Phone

FIP15G is Flyingvoice's premier IP phone which features a 4.3-inch color IPS touch panel, it is ideal for any enterprise executive or manager and teleworker. The phone supports up to 10 SIP accounts, 2.4GHz Wi-Fi connection and dual-port Gigabit Ethernet. With PoE, BLF and programming features, FIP15G offers productivity features for speed of operations and collaboration. Thus, making it an ideal choice for reliable and flawless communication.



Key Features and Benefits

Eye-catching Display

FIP15G IP phone features IPS display that offers wide viewing angles and better color reproduction. Additionally, it is more viewable because of a built-in backlight.

Rich Features, Meet Your Needs

FIP15G supports dual 10/100/1000 Mbps ports and built-in 2.4GHz Wi-Fi, connect people with the way you like. The built-in USB port allows you to record calls onto a USB flash drive. Besides, FIP15G supports EHS Headset.

HD Voice Quality

FIP15G provides a great sound quality. We have created high-definition sound quality solutions for handset, speaker and hands-free scenarios, even in a noisy environment.

High Security and Compatibility

Your conversations are well protected by configuration files with AES, SRTP and TLS call encryption, etc. The FIP1X series IP phones are widely compatible with SIP based devices and PBX platforms such as Asterisk, Broadsoft and 3CX, etc.

- 4.3" 480 x 272px IPS touchscreen
- 10 SIP accounts
- 64 DSS/BLF keys
- HD Voice
- Opus
- 2 x Gigabit Ethernet port
- 1 x USB port
- Support PoE
- Stand with 3 adjustable angles
- RJ9 headset jack
- EHS headset
- 2.4GHz Wi-Fi
- Wall mountable

Audio Features

- > HD voice: HD handset, HD speaker
- > Wideband Codec: G.722, Opus, AMR-WB(Optional), G.711WB(Optional)
- > Narrowband Codec: G.711(A/u), iLBC, G.729AB, G.723, G.726, AMR-NB(Optional)
- > DTMF: In-band, RFC 2833 and SIP info
- > Full-duplex hands-free speakerphone
- > VAD, CNG, AEC, PLC, AJB, AGC

Phone Features

- > 10 SIP accounts
- > Call hold, mute, DND, redial, auto answer
- > One-touch speed dial, hotline, SIP message
- > Call forward, call waiting, call transfer (attended/blind)
- > Paging, intercom, 3-Way conferencing, Dial rule
- > Direct IP call without SIP proxy
- > Set date time manually or automatically
- > IP conflict detection
- > 2.4 GHz Wi-Fi
- > Up to 64 DSS/BLF keys
- > USB port (2.0 compliant) for USB call recording

Directory

- > Phone book (2000 records)
- > Black list
- > XML/LDAP remote phonebook
- > Phonebook search/import/export
- > Call history: dialed/received/missed (60 records)

IP-PBX Features

- > BLF
- > Anonymous call, anonymous call rejection
- > Voice mail, call park, call pickup
- > Message waiting indicator (MWI)

Feature Keys

- > 10 Line keys (touchable)
- > 3 features keys: headset, mute, hands-free speakerphone
- > 4 soft keys (touchable)
- > Volume+/-

Display and Indicator

- > 4.3" 480 x 272px color IPS screen with backlight
- > 16 bit depth color
- > LED for call and message waiting indication
- > Dual-color (red/green) illuminated LEDs for line status information
- > Intuitive user interface with icons and soft keys
- > Multilingual user interface
- > Caller ID with name and number
- > Power saving

Interface

- > 2x RJ45 Ports (Ethernet 10/100/1000 Base-T)
- > Support PoE
- > 1 x RJ9 Handset port
- > 1 x RJ9 Headset port
- > 1 x USB 2.0 port
- > 1 x Power adapter

Management

- > Configuration: browser/phone/auto-provision
- > TFTP/HTTP/HTTPS for Auto Provisioning
- > TR069 (TR104/TR106)
- > Reset to factory, reboot
- > Package tracing export, system log
- > DNS/DNS SRV (RFC 1706, RFC 2782)
- > NAPTR for SIP URI lookup (RFC 2915)
- > Cloud device management: FCMS
- > DHCP server and DHCP client

Others

- > Color: Classic grey
- > Stand with 3 adjustable angles
- > Wall mountable
- > AC/DC Adapter
 - AC Input: 100~240V, 50~60Hz
 - DC Output: 5V, 2A
- > Power consumption(PSU): 1.5-3.5W
- > Power consumption(PoE): 1.9-4.5W
- > Dimension (W x H x D x T) : 190mm x 188.5mm x 173mm x 42.5mm
- > Relative humidity: 10%~90% (No Condensing)
- > Storage temperature: -25~ 65°C
- > Operation temperature: 0~45°C

Network and Security

- > SIP v1 (RFC2543), v2 (RFC3261)
- > Call server redundancy supported
- > NAT Traversal By STUN
- > Proxy mode and peer-to-peer SIP link mode
- > IP assignment: Static IP and DHCP
- > HTTP/HTTPS web server
- > Time and date synchronization using SNTP
- > SDP (RFC 2327) , UDP/TCP
- > Mutil-VLAN, DSCP and 802.1p QoS
- > SRTP
- > TLS
- > HTTPS certificate manager
- > AES encryption for configuration file
- > Digest authentication
- > VPN: PPTP, L2TP, OpenVPN
- > IPv4 /IPv6 ,Dual stack IPv4/IPv6
- > RTP/RTCP (RFC 1889, RFC 1890)
- > ARP/RARP (RFC 826/903)
- > IEEE802.1Q VLAN/802.1p/DSCP
- > SNMPv2
- > LLDP/CDP/DHCP VLAN

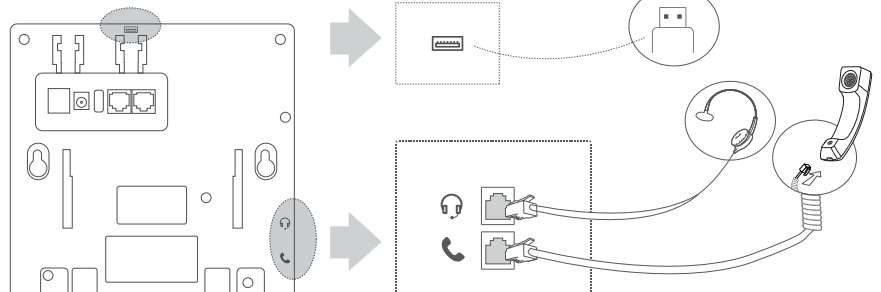
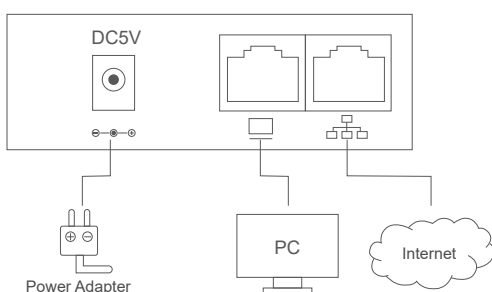
Package Contents

- > Flyingvoice FIP15G IP Phone
- Handset with handset cord
- Ethernet cable
- Stand
- Quick start guide
- Power adapter (Optional)
- > Qty/CTN: 10 PCS
- > N.W/CTN: 7.74 kg
- > G.W/CTN: 10.10 kg
- > Giftbox size: 270mm x 195mm x 78mm
- > Carton meas: 410mm x 410mm x 290mm

Certified by



Compatible with



About Flyingvoice

Flyingvoice is a leading manufacturer of VoIP phones, VoIP adapters, VoIP gateways and VoIP routers, which are widely used throughout the world and highly praised by international carriers, ITSP, ISP and company users.

Driven by ongoing innovation of VoWLAN, Flyingvoice is committed to making easier VoIP products by enabling the enterprise network and united communication. Our people are continuously improving our products and expanding product applications tailored to clients' requirements, which make you collaborate securely, effectively and efficiently – anytime & anywhere.

Copyright

Copyright © Dream Weaver Group. All rights reserved. No parts of this publication may be reproduced or transmitted in any form or by any means, electronic or mechanical, photocopying, recording, or otherwise, for any purpose, without the express written permission of The Dream Weaver Group.

Technical Support

Visit www.dreamweaver.co.za for product documents and FAQ, or contact Dream Weaver by email at support@dreamweaver.co.za or call Dream Weaver on +2711 6581717. We'll get you the help you need.



Dream Weaver Group
Website: www.dreamweaver.co.za
35 Waterford Drive, Unit 15 Waterford Office Park,
Maroeladal, 2191, Gauteng, South Africa
Copyright© Dream Weaver Group. All Rights Reserved

